

ARCHITECTURAL PHOTOGRAPHY



AND
STILL IMAGE
POST PRODUCTION

Luminere Imaging





LUMINERE IMAGING

Orlando Luminere

PHOTOGRAPHER with extensive & broad experience base, technical depth and creative ability, actively engaged in photography since the age of 8.

HIGHLY EXPERIENCED in the use of D-SLR, roll film & 5x4 cameras, tungsten and mains and press flash lighting system; and in the use of light shaping tools. Adept in both the studio and on location.

EXPERIENCED AND QUICK in setting up LIGHTING necessary to create desired image. Well developed ability to self ART DIRECT and add creative value as needed.

HAS A COMPREHENSIVE UNDERSTANDING OF SENSITOMETRY (the science of what happens when film or digital camera sensors are exposed to light), colour management, calibration, DIGITAL IMAGE WORKFLOW for both CMYK press and web output.

IS AN EXPERT PHOTOSHOP USER (since 1996) and is competent with a suite of imaging and design applications, including raw conversion software (Capture One, ACR, Kodak PhotoDesk and Fuji Hyper-Utility), and Microsoft Office, on both pc and mac.

HAS AN ESTABLISHED TRACK RECORD IN TRAINING delivery on digital photography and Photoshop essentials.

Has a track record in training and in management of logistics of more complex photoshoots.

Is able to LISTEN to the client and deliver what is needed.

HAS AMPLE OUTSIDE PHOTOGRAPHY EXPERIENCE, including excellent communication and writing skills, and ability to place work in the context of the larger picture of a clients needs.

Thanks to Ray Strange for above image



SOME TESTIMONIALS

"We have used Orlando to photograph our best home extension of the year, for marketing materials and the annual HIA and MBA awards, which we won!

Orlando's approach was completely professional and he provided all the images we had envisaged plus found additional angles we had ourselves not seen in our work. He has a sensitivity to the architectural medium that is hard to find and has a great attention to details such as squaring vertical lines.

Orlando's use of lighting is outstanding, resulting in images that presented our work as fresh, clean and spacious, even the tight spaces such as bathrooms."

Ross Norwood
DNArchitects
02 6230 4688

"Hamib PL has been using Luminere Imaging for over a decade when we require high quality architectural photography of our buildings. The work he does for us is of the highest quality, at reasonable prices and delivered in a very professional manner."

"We would have no problem in recommending his work where speedy response and quality output are required"

Tony Hedley
Hamib PL
02 6257 5205

"Orlando is a self-taught photographer and art director, with an amazing ability to use light and produce stunning images"

Keli Lenfield
Green Star Developments
0412 824 299

"Orlando's friendly approach meant that he was able to put the clients at ease. As we were photographing [wardrobes] in the client's bedrooms, this was essential. Orlando quickly established rapport and after a short time, the client was comfortable, leaving Orlando and his team to do their work. Few photographers... have this ability."

In one day of the shoot, he worked on 3 different sites. The results of the shoot under such pressure did not suffer and the creative results were excellent."

Lynn Scott
Creative by Design
0418 44 6666

"Orlando has more creativity in his little finger than I have in my glass of wine"

David Myers
Digital Masters Australasia
02 9949 6090





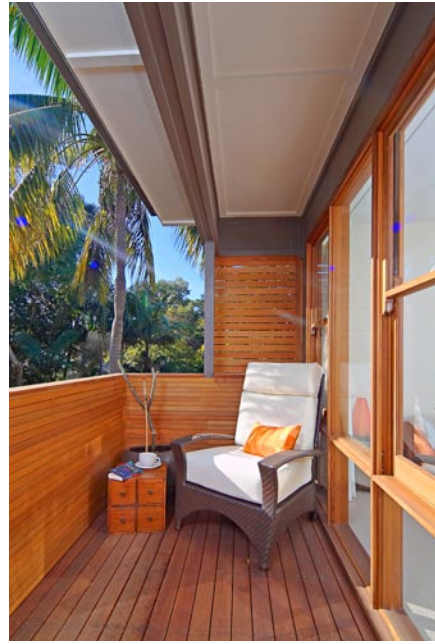
COMMISSIONED BRIEFS



Orlando Luminere 0413 067 241 li@luminere.com.au



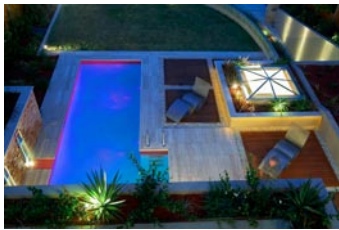
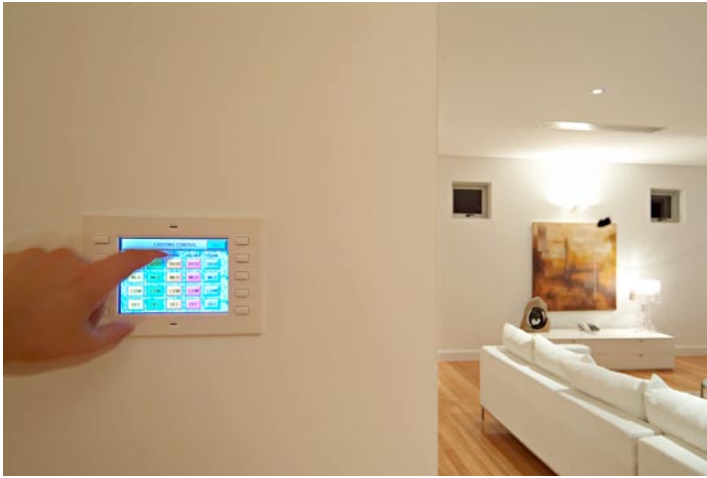
COMMISSIONED BRIEFS



COMMISSIONED BRIEFS

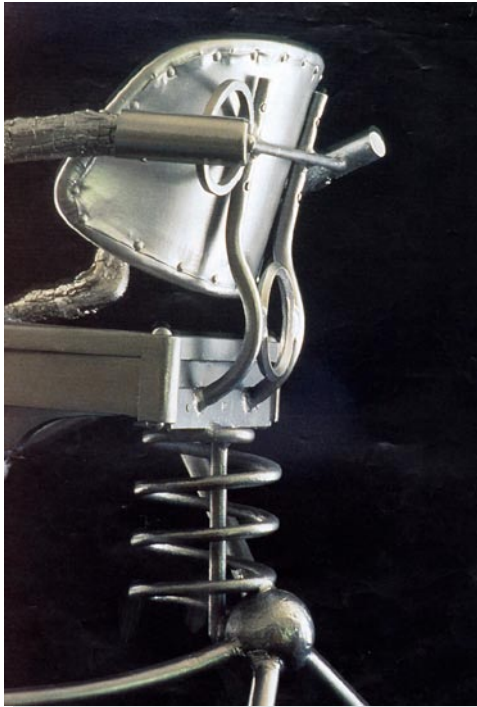


COMMISSIONED BRIEFS



COMMISSIONED BRIEFS





Furniture with soul

An expedition into the urban jungles of far north Queensland has located a tribe of extraordinary furniture designers and builders.

Architectural vocabulary ... note a term that I learnt in form an architect well suited to the 'language' (and the jargon) of architecture. The lesson there was how a Wookosoonoo redevelopment had needed a new architectural language with the skill and how it was vastly better than the earlier proposal for high-end development in the area.

Architects are not the sole owners of a language of form, pattern, texture and colour because designers also have a vocabulary and language of their own. A new furniture design house - Tribal Design - had its genesis in Townsville, Queensland. Tribal Design is a tribe of three: Michael Murphy, the creator of caravans, organic-looking curved glass works and a gradually-rotatable dispenser; Doug Elliot, fascinated by fluorescent colours, with a deep love for 'mopping' together materials as disparate as bone, stainless steel, leather, glass and timber; and Wendy Robinson, creator of the range of Tribal Design cashbars, pillows and accessories.

The Tribal Design design vocabulary is quite different from the norms of furniture language. It is also an escape from the conventional expectations into which we as mass-market educated. Tribal Design is refreshing and unimpeachable.

Tribal Design could be seen as analogous to Gaudi, they both dare to play wildly and unconsciously with form, pattern, colour and texture. And the eyes of many who appreciate art and design, they get away with it.

By Catherine Lawrence



paths are well balanced and easy to use, and also flexible. A stretch bamboo reed with treated rubber handle works best for your hand on a hot summer day. And it feels good to touch.

Tribal Design will receive financial assistance from Arts Queensland to market and exhibit their furniture in the latter half of this year. Finally, considered for a major showing at the Durrant Street Gallery in Brisbane, in November 2005. The option of taking the furniture on tour to Queensland regional and outback centres is also being explored.

Marketing possibilities being considered by Tribal Design include the use of their furniture in interior architectural settings such as entrance foyers or reception areas and cafes or bistros. Creating a Tribal Design cafe (and catering for the occasional coffee), continues Michael, is a breather's ambition. For moment, work continues in a dilapidated supermarket in the centre of Townsville (in north Queensland). It provides ample factory space for the creation of accessories, and has all the benefits of inventory being north Queensland style.




© KAPLAN 2005 91



COMMISSIONED BRIEFS



COMMISSIONED BRIEFS



COMMISSIONED BRIEFS



COMMISSIONED BRIEFS

